



ZENITH

FIRST 53

OPEN KEEL

2020

year of production

17,16 m

Length

6 + skipper

guests sleeping

6 + crew

berths

3 + skipper

cabins

3 + skipper

WC / shower

First 53 is created with sights set on high-performance cruising and more, this “Luxury Performance” sailing yacht was designed for sailors who demand speed in absolute comfort. With a well-balanced hull and sensationally responsive helm, free-flowing deck plan, and a truly avant-garde interior, the First 53 embodies the renaissance of the legendary First name.

Exterior design

The gentle reverse sheer and low-slung coach roof make her look fast even when she is moored. Yet, there is simply no compromise to comfort or safety in her cockpit and deck layout, both of which are free-flowing, cleverly arranged, and exceedingly elegant.

Her performance mast, high-end deck gear, and finely tuned hull deliver unparalleled thrills in any conditions, whether enjoying a doublehanded sunset run or a fully crewed offshore race.

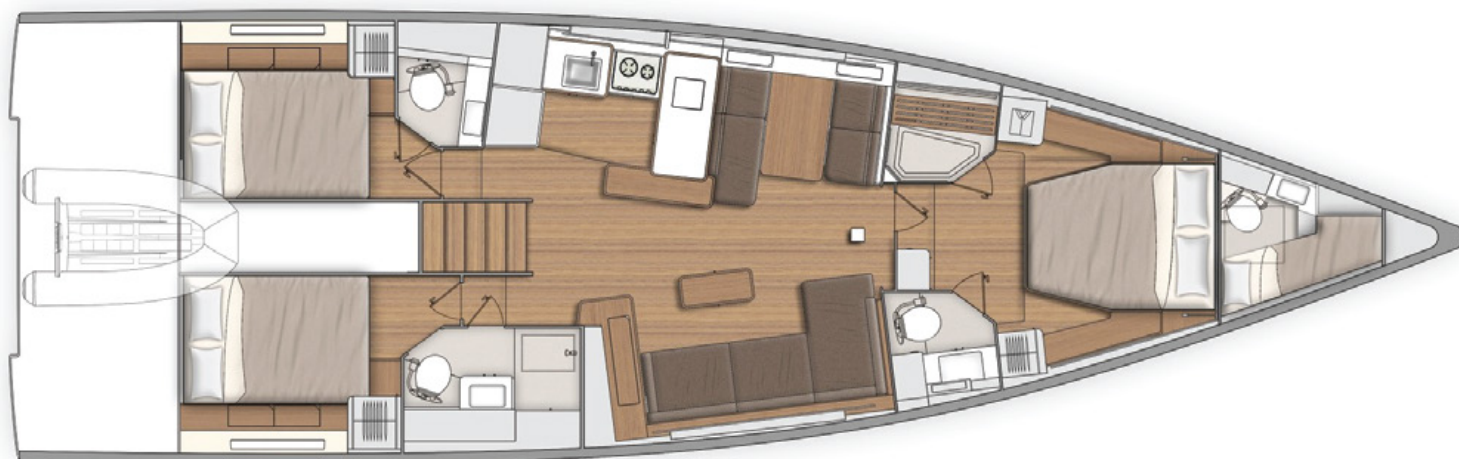
Interior design

The modern, almost minimalist interior represents a true departure from the norm, offering a completely reimagined living space with a focus on practicality, comfort, and style. To starboard, a dedicated home-style couch is the ideal place for lounging and relaxation, and to port, the extendable dinner table offers up to six seats without permanently taking up room in the salon. Polished, molded woods pleasantly contrast the lacquered white bulkheads, creating a bright feeling that is also undeniably warm.

There is plenty of storage space throughout the boat, which is offered in both a three-cabin two-head or three-cabin three-head configuration, and the highly customizable L-shape galley is user-friendly, both at sea and at anchor. Well-placed hatches and windows ensure excellent ventilation and infuse the interior with an abundance of natural light.

LAYOUT

FIRST 53 YACHT - layout 3 CABINS & 3 HEADS



main specifications.

TYPE: SAILING YACHT

BUILDER: Beneteau

BUILT YEAR: 2020

CHARTER TYPE:

bareboat/ skippered

CABINS: 3 + 1 in the bow

BERTHS: 6 + 1 *max

HEADS: 3 + 1 in the bow

REGISTERED FOR: 8 pax

TOILETS: electric3, manual*1

L.O.A: 17,16 m

BEAM: 5,00 m

DRAFT: 2,5 m

ENGINE: Yanmar

ENGINE POWER: 1 x 110 HP

WATER TANKS: 1000 l

FUEL TANKS: 500 l

TENDER: Williams Sport 285

OUTBOARD ENGINE: 6 HP

MAIN SAIL: Full-batten

GENOA: Yes, roll

BIMINI: Yes

COCKPIT ENCLOSURE: Yes

SPEAYHOOD: Yes

SELF TACKING JIB: No

CODE ZERO: Yes

GENNAKER: No













experience the true freedom...

WELCOME
ON BOARD!